



January 9, 2025

Franklin County Planning Commission  
Attn: Ms. Lisa Cooper, Planning Director  
1255 Franklin Street, Suite 103  
Rocky Mount, VA 24151

Re: Comprehensive Plan Amendment – Proposed Substation and Electrical Transmission Map

Dear Members of the Planning Commission:

At its January 5, 2026, meeting, the Franklin County Board of Supervisors voted to initiate a Comprehensive Plan amendment associated with the proposed electrical substation and related electrical transmission lines. The proposed amendment would involve an amendment to the existing map #9.5 as shown on the attached exhibit.

By this action, the Board of Supervisors is directing the Planning Commission to commence review of the proposed Comprehensive Plan amendment and to fast-track the amendment process in accordance with applicable state law and County procedures by scheduling a public hearing on February 10, 2026. The Board has determined that timely consideration of this amendment is necessary to address critical electrical infrastructure needs and to support planned economic development within the County.

This letter serves as formal notice of the Board's directive. County staff will provide the Planning Commission with supporting materials, and assistance as needed to facilitate an expedited review and recommendation to the Board of Supervisors.

The Board of Supervisors appreciates the Planning Commission's prompt attention to this matter and looks forward to receiving the Commission's recommendation.

Please contact my office should additional information be required.

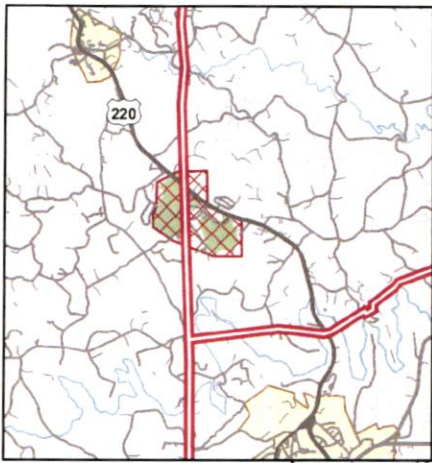
Sincerely,

Christopher L. Whitlow  
County Administrator

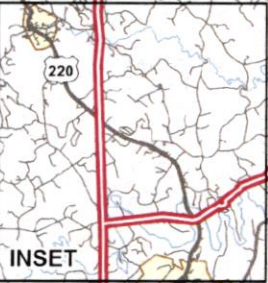
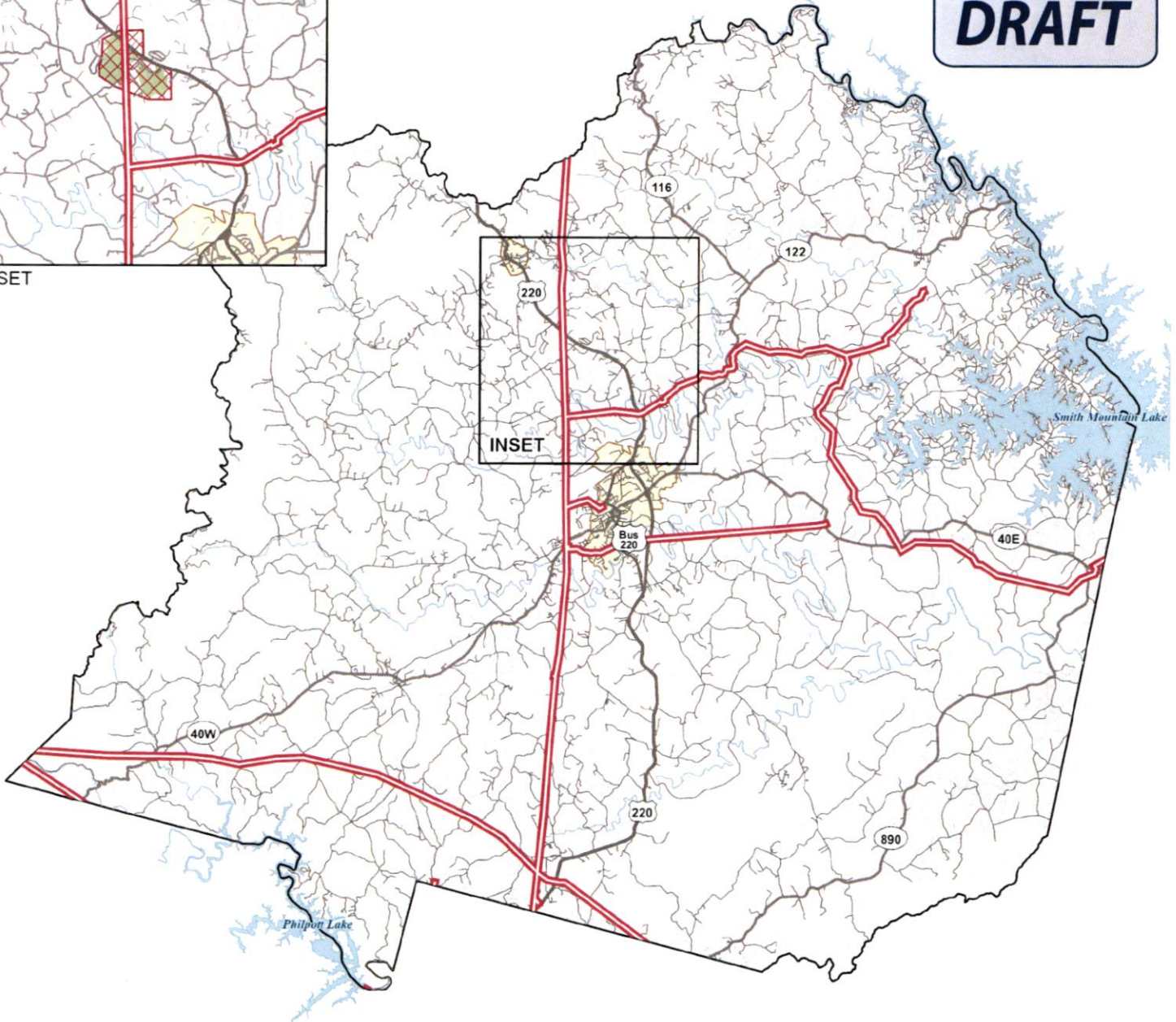
COUNTY ADMINISTRATOR  
1255 FRANKLIN STREET, SUITE 112  
ROCKY MOUNT, VIRGINIA 24151  
(540) 483-3030  
administration@franklincountyva.gov  
www.franklincountyva.gov

# Map 9.5 | Power Transmission Lines

**DRAFT**



INSET



INSET

## Electric Transmission Lines 2045 Comprehensive Plan

-  Electric Transmission Lines
-  Potential Substation & Line Extension
-  Summit View Business Park
-  Towns
-  County Boundary
-  Lakes



Franklin County, VA



The data layers provided herein were compiled from various sources within a geographic information system (GIS) for the primary use of Franklin County. The data provided herein are believed to be accurate but are provided for reference purposes only. These GIS data are in no way meant as a replacement for a legal survey, legal description, or standard due diligence. No guarantee, expressed or implied, is made regarding their accuracy, currency, adequacy, usefulness, or reliability. These data are provided "as is" and neither Franklin County nor its employees shall be held responsible for their inappropriate use.